

DTX

DOUBLE SHEAR BEAM LOAD CELLS

LAUMAS®



Capacity from 20 klb to 60 klb



- NICKEL PLATED ALLOY STEEL
- COMBINED ERROR $\leq \pm 0.02\%$
- PROTECTION CLASS IP68



CAPACITY	kg	ACCURACY CLASS C3	IECEx	Ex	EAC Ex	EAC	UK TRADE APPROVED	NET WEIGHT (kg)	CODE
20klb / 9 ton		•	•	•	•	•	•	2.7	DTX20KLB
30klb / 13.6 ton		•	•	•	•	•	•	7.75	DTX30KLB
40klb / 18 ton		•	•	•	•	•	•	7.78	DTX40KLB
50klb / 23 ton		•	•	•	•	•	•	8.3	DTX50KLB
60klb / 27 ton		•	•	•	•	•	•	8.5	DTX60KLB

ON REQUEST

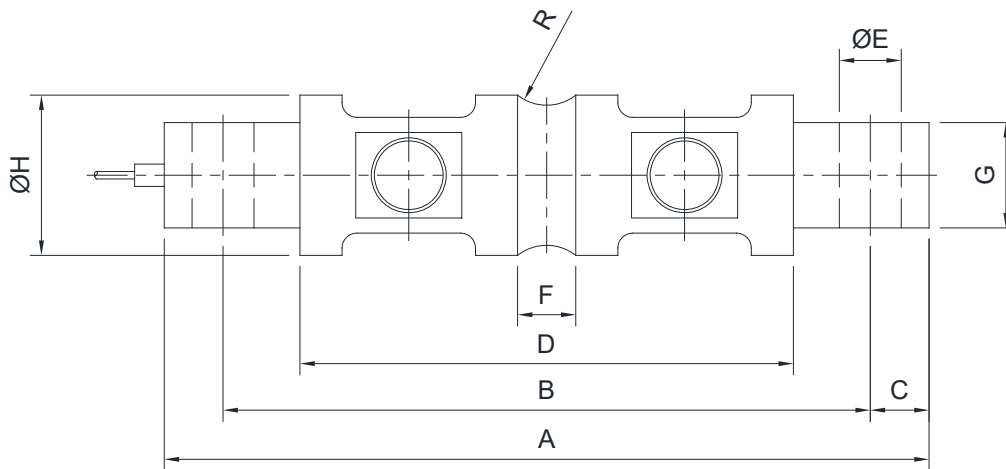
CERTIFICATIONS

- OIML R60 C3
- Complies with the Eurasian Custom Union standards
- Complies with the United Kingdom regulations for legal for trade use

CERTIFICATIONS ON REQUEST

- ATEX II 1GD (zone 0-1-2-20-21-22)
- IECEx (zone 0-1-2-20-21-22)
- Complies with the Eurasian Custom Union standards for use in potentially explosive atmospheres

DIMENSIONS (mm)



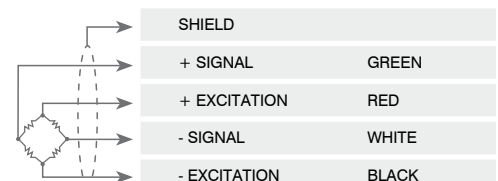
	A	B	C	D	ØE	F	G	ØH	R
20 klb	206	174.6	15.7	133	16.7	21.6	28.4	49.5	12.7
30-60 klb	260	215	22.4	165	27	25.7	60.2	76.2	25.4

TECHNICAL FEATURES

Material	Nickel plated alloy steel		
OIML R60 Accuracy class • Verification intervals	C3 • 3000		
Nominal load (E max)	20, 30, 40, 50, 60 klb		
Minimum verification interval (V min)	E max / 10000 - E max / 15000		
Combined error	≤ ±0.023%		
Protection class	IP68		
Rated output	3.0 mV/V ±0.1%	Input resistance	700 Ω ±7
Temperature effect on zero	0.002% °C	Output resistance	700 Ω ±7
Temperature effect on span	0.002% °C	Zero balance	≤ ±1%
Compensated temperature range	-10 °C / +40 °C	Insulation resistance	≥5000 MΩ
Operating temperature range	-35 °C / +65 °C	Safe overload (% of full scale)	150%
Creep at nominal load in 30 minutes	0.016%	Ultimate overload (% of full scale)	300%
Max supply voltage without damage	18 V	Deflection at nominal load	0.6 mm

ELECTRICAL CONNECTIONS

Cable length	9 m
Cable diameter	5 mm (20klb) / 8 mm (30klb-60klb)
Cores	4 x 0.22 mm ²



The Company reserves the right to make changes to the technical data, drawings and images without notice.